



Super Sonic
Equipment Rentals

780-886-9954

SERVICE / SAFETY / SIMPLE

GENERATORS



POWER IT UP!

Super Sonic offers diesel fueled generators to meet any kind of temporary power requirement. Our full range of brand name, top quality generators offer the solution to your power needs.

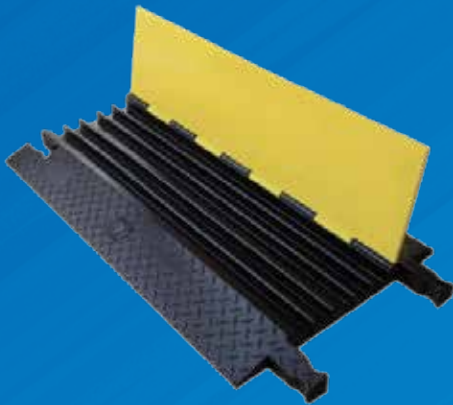
Generator sizes include 25KW, 50KW, 70KW and 85KW with single phase and 3-phase power available.

Enclosures offer low noise and mobile power. Skid mounted units for easy transport and added security.



**WACKER
NEUSON**

ACCESSORIES



This 5 channel heavy-duty rubber Cable Protector keeps up to 5 cables, hoses, or wires protected from traffic in all conditions. Made from commercial grade yellow and black rubber, the heavy duty construction of this cable ramp allows it to support up to 18,000 lbs. per axle. Straight sections can be paired with right and left-hand turn sections to create customized solutions for your application. Diamond tread pattern on all outer surfaces for maximum traction.

27 degree incline angle.
35 1/2 long x 19 3/4 wide



Spider box accessories to meet the challenges of any power configuration set-up.



Portable, 45-100kVA isolation transformer that is ideal for all applications. Constructed with a tough steel cage, casters and Cam-Lok connections.

Designed as a weatherproof, skid mount unit substation assembly complete with step down transformer & low voltage distribution section for portable use complete with one side mounted device plate on each side.

Dimensions: 44H x 38W x 31D



IX410 400,000 BTU/HR

SURE FLAME®

High Capacity, Indirect Fired Heater

4 SAFETY SHUTDOWN CONTROLS.

- High limit switch
 - Exhaust limit switch
 - Air switch
 - Flame Rod
-
- Dual fuel selector valve for propane & natural gas
-
- In line fuel heater for diesel heaters

DUCTABLE.

- One 16" duct
- Two 12" duct (optional)

16" Recirculation duct attachment feature.



SPECIFICATIONS (GAS)

HEAT CAPACITY	400,000BTU
FUEL CONSUMPTION NG/P	372 CFH / 160CFH
POWER REQUIREMENTS	115V/60Hz/ 1PH/12A
DIMENSIONS (LxWxH)	82" x 29" x 58.5"
NET WEIGHT	560 lbs
MAX HEATED AIR FLOW (w/o DUCT)	3062CFM**
AIR OUTLET (Options)	One 16" / Two 12"
AIR INLET	Ductable 16"

SPECIFICATIONS (DIESEL)

HEAT CAPACITY	400,000BTU
FUEL CONSUMPTION NG/P	10.8 L/hr
POWER REQUIREMENTS	115V/60Hz/1PH/12A
DIMENSIONS (LxWxH)	85" x 32" x 59"
NET WEIGHT	676 lbs
MAX HEATED AIR FLOW (w/o DUCT)	3000CFM**
AIR OUTLET (Options)	One 16" / Two 12"
AIR INLET	Ductable 16"



- No open flame
- No moisture
- No supervision required
temperature maintained
by remote thermostat
- Easy ductwork
attachments – more
versatility
- No chemical reactions
with epoxies or concrete
- Heat recirculation to
prevent freezing of the
fuel line

SPECIFICATIONS - MODEL IDF 350-11

Max Capacity	350,000 BTU
Discharge Temp.	Up to 230F w/ duct creating .4" static
Fan Motor	½ HP 1800 RPM (15Amp)
Net Weight (approx)	420 lbs
Air Outlet	2x12" (Optional 1x16")
Dimensions (LxWxH)	70" x 35" x 50"
Fuel Tank	138L
Runtime	10hrs

SPECIFICATIONS - MODEL XLT 350

Max Capacity	350,000 BTU
Discharge Temp.	Up to 230F w/ duct creating .4" static
Fan Motor	½ HP 1800 RPM (15Amp)
Net Weight (approx)	550lbs
Air Outlet	2x12" (Optional 1x16")
Dimensions (LxWxH)	70" x 35" x 57"
Fuel Tank	227L
Runtime	24hrs

Forklift lifting pockets on the diesel XLT models.

IX800 800,000 BTU/HR

SURE FLAME

HIGH CAPACITY, INDIRECT FIRED HEATER DIESEL & KEROSENE

- 2 x 16" ducts
(Optional 1 x 20")
- 20 hour run time on
diesel with built in tank
or add fuel cube
- 150% Containment
- Accepts both 1-phase
and 3-phase electrical
input as standard
feature
- Compact Design - Uses
less space on job site
and during off season
storage.
- Return air capability to
lower operating cost



SPECIFICATIONS

HEAT INPUT	800,000 BTU/hr
HEATER EFFICIENCY	86 %
APPROX. FUEL CONSUMPTION	
Propane	Propane 33 l/hr 36.9 lbs/hr
Natural Gas	800 CFH
Diesel	22.5L/hr
FAN RATING	13,600* CFM
AIR FLOW (at 90 °C)	6,000 CFM
MAX AMPS	Diesel 208/230 at -40°C Ø1 43.2/39.1
	Natural Gas 208/230 at -40°C Ø 27.7/25.1
OUTLET DIAMETER	2 x 16" or 1 x 20"
MAX DUCT LENGTH	100'
FLUE CONNECTION	10"
DIMENSIONS (LxWxH)	95" x 29" x 58"
WEIGHT	1340 Lbs
GAS SUPPLY PRESSURE	1/2 to 5 PSI
FUEL TANK	443L



THERMOBILE®

91% EFFICIENT
CLEAN DRY HEAT 700.000

THERMOBILE

IMAC SERIES

- Fan and thermostat security resettable from control box.
- Soft start, automatic phase reverser and hour counter.
- 24" Distribution head standard with 4 - 12" hose adaptors available.
- Room ventilation is required, fresh air connection is possible.
- Thermostatically controlled with overheat protection and safety shut off.
- At oil fired heaters Tigerloop oil de-aerator using single fuel line standard.

SPECIFICATIONS - GAS

MODEL	IMAC 2000 S GAS
HEAT OUTPUT	700.000
FUEL CONSUMPTION	NG 610CFH-LP 235CFH
POWER	3x208-230V/60HZ
DIMENSIONS (LXWXH)	95 x 31 x 54
WEIGHT (LBS)	1.211
OUTLER CONE (IN.)	24
MAX DUCT LENGTH (ft.)	200

SPECIFICATIONS - DIESEL

MODEL	IMAC 2000 S OIL
HEAT OUTPUT	700.000
FUEL CONSUMPTION	4.85GPH
POWER	3x208-230V/60HZ
DIMENSIONS (LXWXH)	95 x 31 x 54
WEIGHT (LBS)	1.201
OUTLER CONE (IN.)	24
MAX DUCT LENGTH (ft.)	200



FLEX-TEMP

FUSION 1400 & FUSION 3000

Flex-Temp
SYSTEMS

The Fusion 1400 is a compact hydronic surface heat system for smaller projects. Heated hose can stay on the spool allowing smaller lengths to be applied to the site. Easily train users on this equipment with one touch-start capability. Thaw specific areas, and use during cold weather concrete warming/curing, pre pour warming, and ground frost prevention. Light enough to be towed by a pickup. Priced for performance.



SPECIFICATIONS - 1400

Fuel Capacity	100 Gal. (378.54 liters)
Fuel Requirements	#1 Diesel Fuel
Fuel Consumption	1.25 GPH nozzle, 4.73 LPH without generator (at full operation)
Boilers	One 210,000 Input BTU
Operating Temp	50°F – 190°F (10°C – 88°C)
Boiler Efficiency	87% (with fuel per-heater)
Heat Transfer Fluid	48 US gallons (181.70 liters)
Space Heating	Up to 175,000 BTUs
Thaw Area	Up to 2,800 sq. ft. (260 sq m)
Cure Area	Up to 8,400 sq. ft. (780 sq m) (optimal conditions slab on grade)

SPECIFICATIONS - 3000

Fuel Capacity	170 Gallons (644 liters)
Fuel Requirements	#1 Diesel Fuel
Fuel Consumption	1.75 GPH burner nozzle, 6.63 LPH without generator (at full operation)
Boilers	One 280,000 Input BTU
Operating Temp	50°F – 190°F (10°C – 88°C)
Boiler Efficiency	87% (with fuel per-heater)
Heat Transfer Fluid	80 US gallons (303 liters)
Space Heating	Up to 234,000 BTUs
Thaw Area	Up to 6,000 sq. ft.(557 sq m)
Cure Area	Up to 18,000 sq. ft. (1,672 sq m) (optimal conditions slab on grade)

Site ready, this one touch start machine is a portable hydronic surface heat system with multi-tasking proficiency. Ground thawing, cold weather concrete warming/curing, pre pour warming, ground frost prevention and other heat applications for extreme cold. The Fusion 3000 maintains reliable performance throughout the winter and comes with optional remote and auto control technologies.





**WACKER
NEUSON**

HYDRONIC SURFACE HEATERS

Designed with the safety features you require and the simple, intelligent operation you desire.



E1250

Engineered for reliable performance and trouble-free starts with large 74 gallon fuel tank for up to 115 hours of run time at 87% efficiency. With thawing capabilities of up to 2,500 sq. ft. of frozen ground at an average rate of one-foot-deep per day*, the E 1250 will set, finish and cure 2,500 sq. ft. of concrete or up to 7,500 sq. ft. with accessories (standard model only).

Heating Power: 140,000 BTU/h
Capacity: 2,500 ft² · Runtime: 90 h



E3000

The E3000 thaws or cures up to 6,000 sq. ft. With accessories this heater will cure up to 18,000 sq. ft. or provide 535,000 cu. ft. of dry heat at 83% efficiency, the highest in the industry.

Several options are available including a 3kW or 6kW liquid-cooled diesel generator and lifting bail.

Heating Power: 385,000 BTU/h
Capacity: 6,000 ft² · Runtime: 108 h

80,000 BTU DUAL FUEL HEATER

L.B.WHITE



Features

- Dependable electronic ignition
- Thermostatic control & quiet operation
- Totally enclosed flame, airflow safety devices and enclosed electronics
- Flexible indoor or outdoor placement
- Full line of ducting accessories
- CSA U.S., CSA Canada, and CE Type Certified models
- Tri-Shield steel case
- Direct spark ignition
- Larger sizes are available upon request

SPECIFICATIONS

Max BTU/Hr	80,000
Airflow	450 cfm
Fuel Consumption (Max)	3.7 lbs/hr 8 cu.ft./hr
Amps(Starting/Cont. Oper.)	5 / 1.5
Volts / Hz / Phase	115 / 60 / 1
Dimensions (L x W x H)	29.5 x 13.5 x 20
Weight (Net/Shipping)	67 lbs / 74 lbs



125,000 BTU BLAST 125 RADIANT PROPANE HEATER

- Lightweight for easy maneuverability
- Piezo pilot ignition
- Improved design over competitive models prevents carbon build-up for longer run time
- Direct-fired = 99.97% fuel efficiency
- Tip over switch shuts product down for safety
- High temperature paint

SPECIFICATIONS

BTU/Hr	125,000
Fuel Consumption	5.8 lbs/hr
Dimensions (L x W x H)	16.5" x 16.2" x 35.0"
Shipping Weight	43 LBS

PATRON E6 240V, 6KW ELECTRIC HEATER

The Patron E6 is the newest member of the Patron electric family. Built with the same quality and ruggedness of all the other Patron heaters, it offers great opportunity for use in many applications. The E6 is a 240V unit and pulls 25 amps. This means it will run flawlessly off a regular clothing dryer outlet. Make sure your receptacle is a NEMA 14-30P or 14-50P, to ensure compatibility with our plug. The E6 produces a ton of heat, and disperses it in large areas. Ask about our other sizes!



SPECIFICATIONS

BTU/Hr	20,500
Watts	6,000
Volts / Amps	230V / 25A
Phase	1PH
Thermostat	32°F – 100°F
Airflow	250 CFM
Weight	32.9 LBS
L x W x H	20" x 12" x 17"
Power Cord	10' (8 AWG)
Plug Type	NEMA 14-30P
Decibel Rating	55 dB(A) 1m
Max Cord Length	100-ft (8AWG, 3-wire, SOOW)

Features

- For heating, drying, and ventilating
- Integrated ambient thermostat from 32°F – 100°F
- Overheat protection at 104°F
- Durable steel casing with powder coating
- Stainless jacketed heating coils
- Fast, high temperature rise with uni-directional fan
- User-friendly and proven reliability
- Works on 208V
- Plugs directly into a standard dryer outlet

ACCESSORIES

(12" or 16")
Thermoplastic Canvas Duct



Silicone (500F) Duct
(12" or 16")



Thermostat



Perforated Duct



Gas Regulator



Extension Cord



Gas Hose



TRANSCUBE GLOBAL
2000L



TRANSCUBE GLOBAL
1000L



UB Deductable U18



FN20c Fan



Heat Wagon FN42 Fan



UB18 Fan



Tel: 780.886.9954 • www.supersonicrentals.ca • info@supersonicstucco.ca

Mailing Address: #113 101 Granada Blvd, Sherwood Park, AB T8A 4W2